

AmplideX[®]

PCR/CE *DMPK* Kit*

Simply and Reliably Size *DMPK* Repeat Expansions within a Single Day

The AmplideX[®] PCR/CE *DMPK* Kit* introduces a groundbreaking alternative for the detection and sizing of CTG repeats within the *DMPK* gene. Challenged by very large trinucleotide expansions, *DMPK* analysis has required the use of Southern blot technology, thereby limiting many laboratories' ability to resolve these repeat sequences. By introducing a simple, streamlined, PCR-only workflow, the AmplideX PCR/CE *DMPK* Kit* can replace Southern blot and put *DMPK* analysis within the reach of laboratories everywhere.

REDUCED COMPLEXITY

- Proprietary PCR solutions for GC-rich amplification and detection
- Eliminates need for Southern blot
- Resolves zygosity and detects mosaicism

OPTIMIZED WORKFLOW

- Direct injection of PCR products into CE instruments
- Fully kitted, end-to-end solutions that significantly reduce hands-on-time
- Sample-to-result possible within a single shift

QUALITY PERFORMANCE

- Accurate sizing of alleles ≤ 200 CTG repeats and detection of all alleles > 200 repeats using CE
- Optional AGE protocol allows sizing of alleles between 200-2000 repeats
- Analysis tool converts raw base pair data into repeat number



Figure 1. AmplideX PCR/CE *DMPK* Workflow, including optional AGE workflow for larger expansions.


Asuragen[®]

Palex
Constant Improvement

AmplideX[®]

PCR/CE *DMPK* Kit*



Sample Name	External Lab PCR + Southern	Asuragen PCR/CE	Asuragen PCR/AGE (allele 2)
S1	10, 300-500	11, >200	Smear, High Mosaic 300-500
S2	4, 1200-1350	5, >200	~1100
S3	4, 1100-1500	5, >200	Smear, High Mosaic >500
S4	11, 200-300	12, >200	~260-350
S5	4, 800-900	5, >200	~650-700
S6	25, 1050	26, >200	~1000
S7	12, 100-150	13, 71, 129	70, 130
S8	11, 1900-2220	12, >200	700, 1900
S9	21, 300	22, >200	Mosaic, 261
S10	4, 50-250	5, >200	150, Smear >200

*AmplideX detects mosaicism down to 5%

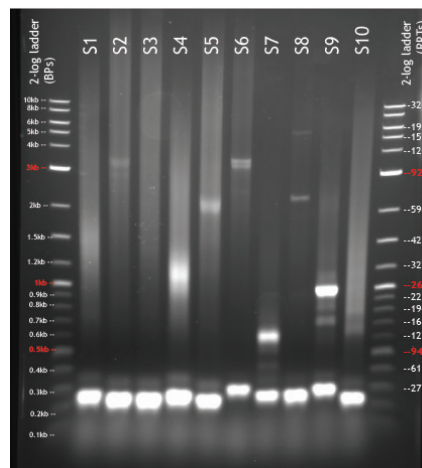


Figure 2. Comparison of residual clinical sample results between Asuragen (AmplideX Kit) and partner lab (PCR + Southern blot).

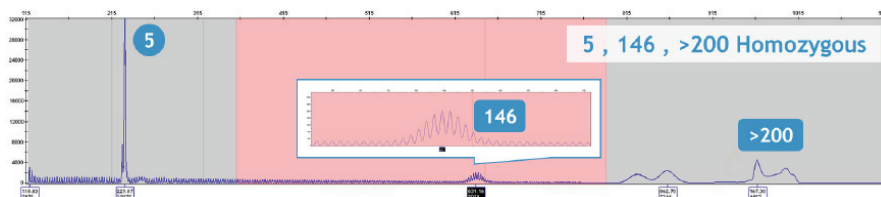


Figure 3. Sensitive and accurate sizing of *DMPK* expansions up to 200 repeats.

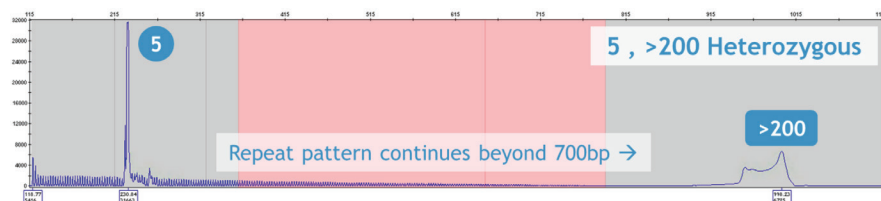
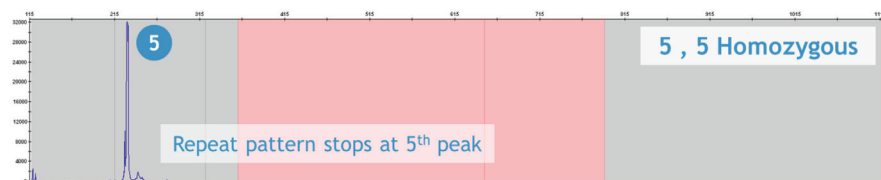


Figure 4. Clear resolution of zygosity.

*For Research Use Only. Not for use in Diagnostic procedures.

KIT ORDERING INFORMATION

AmplideX PCR/CE *DMPK* Kit*

[P/N: 49655] 32 REACTIONS

Palex
Constant Improvement