

AmplideX[®]

PCR/CE TOMM40 Kit*



Reliably Genotype the Poly-T Repeats in TOMM40

Alzheimer's Disease (AD) is now the most common cause of dementia worldwide, affecting over 46M people. These numbers are expected to increase dramatically, reaching nearly 75M people by 2030¹. Given this growing human and healthcare burden, the need to identify potential biomarkers for early detection and risk assessment remains a major focus.

Multiple studies have implicated the poly-T length polymorphism, rs10524523 ('523), of the TOMM40 gene in the age of onset of AD. The AmplideX PCR/CE TOMM40 Kit (RUO) is the first clinical research tool that accurately resolves the poly-T polymorphism at the TOMM40 '523 locus and provides researchers with a reliable and reproducible assay to advance the understanding of the role of this gene in AD.



Figure 1: AmplideX PCR/CE TOMM40 Kit* components

REDUCED COMPLEXITY

Simplified analysis of the TOMM40 gene

- First-ever kitted and distributed solution
- Easy-to-interpret results

OPTIMIZED WORKFLOW

Streamlined, rapid and reliable workflow

- Validated protocol ensures reproducible results
- Minimal hands-on and TAT (Figure 2)

QUALITY PERFORMANCE

Greater sensitivity and accuracy than currently available methods

- 1 base pair resolution for poly-T sizing ensures accurate results at key genotypic boundaries
- Reliable and accurate results every time



Figure 2: AmplideX PCR/CE TOMM40 Kit* workflow



¹Source: World Alzheimer Report 2015 | *For research use only. Not for use in diagnostic procedures.

AmplideX[®]

PCR/CE TOMM40 Kit*

ANALYTICAL CHARACTERISTICS OF AMPLIDEX PCR/CE TOMM40 KIT (RUO)

REPRODUCIBLE:

Can be used to reliably compare research results across institutions and cohorts

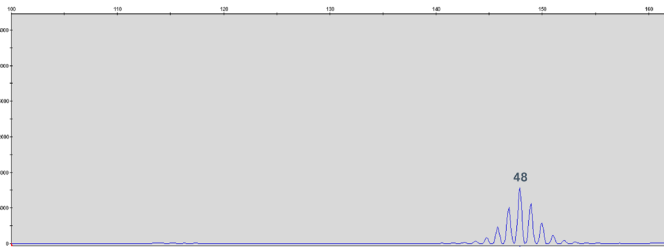


Figure 3: A synthetic 48mer was accurately sized 8/8 times within 1 bp (7/8 = 48 Ts; 1/8 = 47 Ts)

ACCURATE:

Single base pair resolution ensures accurate results at key genotypic boundaries associated with the age of onset in Late-Onset AD (LOAD)

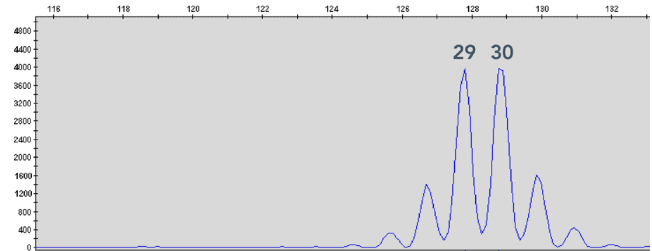


Figure 4: Corriell sample NG09714 accurately sized and categorized by the kit: Size 29,30 Ts; Category: L/VL (Long/Very Long)

FLEXIBLE:

Compatible with a wide range of DNA input, including low amounts of DNA

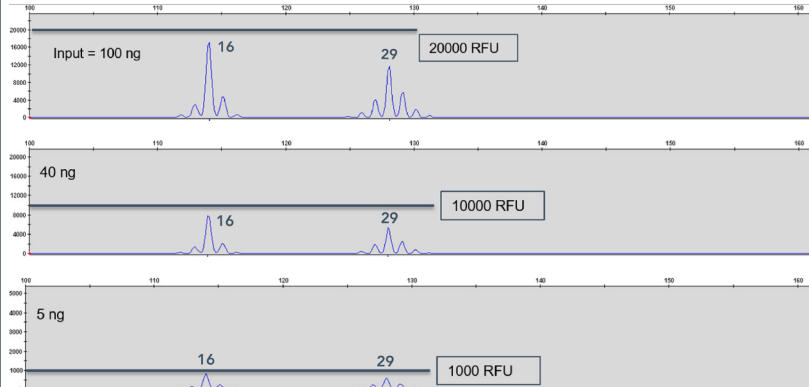


Figure 5: Amplification of 16,29 T alleles at DNA inputs ranging from 5 ng to 100 ng: Even at the lowest input, the peaks are clearly visible above the background signal

2500-0668

KIT ORDERING INFORMATION

AmplideX[®] PCR/CE TOMM40 Kit*

[P/N 49611] 48 REACTIONS

*For research use only. Not for use in diagnostic procedures.



www.rafer.es

Barcelona

93 645 50 28
barcelona@rafer.es

Bilbao

94 499 85 80
bilbao@rafer.es

La Coruña

981 93 89 26
galicia@rafer.es

Madrid

91 365 15 70
madrid@rafer.es

Málaga

639 359 792
malaga@rafer.es

Sevilla

954 369 334
sevilla@rafer.es

Valencia

96 340 48 00
levante@rafer.es

Zaragoza

976 23 74 00
rafer@rafer.es

Lisboa

21 154 19 98
lisboa@rafer.es